



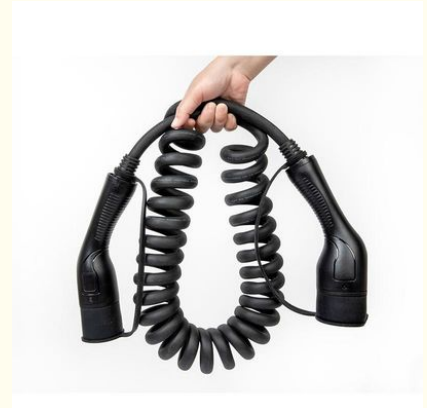
## 11KW Type2 To Type2 AC EV Charger Cable EV Charging Station Plug Lead 16A 3Phase 5M

Our Product Introduction

for more products please visit us on [evstationcharger.com](http://evstationcharger.com)

### Basic Information

- Place of Origin: China
- Brand Name: MINKO
- Certification: CE(ICR lab), UKCA, ROHS, ISO, REACH
- Model Number: V1-16T BS
- Minimum Order Quantity: 5 pieces
- Price: negotiation
- Packaging Details: L210xW85xH52 (mm)
- Delivery Time: 8 -10 working days
- Payment Terms: T/T, Western Union, MoneyGram, Paypal, Skrill, Transferwise
- Supply Ability: 1000000 pieces per month



### Product Specification

- Executive Standard: IEC 62196 Type 2
- Rated Voltage: AC 480V
- Rated Current: 16A/3Phase
- Rated Power: 11kW
- Color: Black
- Protection Rank: IP55
- Highlight: 5m AC EV Charger, 3phase AC EV Charger, 11kw type 2 to j1772 adapter



### More Images



## Product Description

### 11KW Type2 to Type2 AC EV Charger Cable EV Charging Station Plug Lead 16A 3Phase 5M

#### Detailed specification:

Portable EV Charging with power ratings of 3.5KW, 7 kW, 11kW, 22kW is suitable for different types of vehicles.

Adjustable current, suitable for various scenarios.

The Voltage and Current are stable during charging, which can protect the battery and delay using time.

We can use normally in ultra-high temperature environment up to 50°C.

#### EN Standard Strong Patience.

The charging cable meets the latest EN standard request of an electric vehicle charging cable. Highly resistant to the cold & heat,

with the cable maintaining flexibility at -40°C, therefore withstanding colder conditions.

#### TPU Cable.

Highly resistant to bending, protecting the internal wiring harness to function normally under repeated bending conditions.

#### Climate Friendly Stronger & Anti-aging.

The halogen-free charging cable is climate friendly, meeting the EU's and USA's environmental standards. The tight, strong molecular structure provides a long-lasting charging cable solution, ensuring greater service life.

#### Arcing Design.

Unique self-cleaning' design ensures that impurities on the surface of the pins can be removed during each plug-in process.

#### Ergonomic Design and Integrated Design

Angled horizontal bending design, in line with the habit of manual force which allows for convenient plugging & unplugging.

K10 rated with an integrated design ensuring that you can charge safely in all weather conditions.

#### Better Conductivity.

Silver plating on the pins ensures greater conductivity, charging efficiency and reduces heat generation.

#### Temperature Monitoring

Detects if the temperature is higher than the 'set safe' value, if this occurs, the current will automatically be cut off.

Electrical Performance	
Protection rank	IP55
Fire retardant level	94 V-0
Rated Current	16A / 32A
Rated voltage	250V / 480V
Insulation resistance	> 1000M ohm (DC 500V)
Terminal temperature rise	<50K
Withstand voltage	2000V
Operating temperature	30°C to 50°C
Mechanical Testing	
Mechanical life	no load plug in / pull out > 10000 times
Impact of external force	qualify 1m drop or 2 Ton vehicle run over
Materials Applied	
Connector	by copper alloy with nickel bottom plating and 3um silver surface plating
Shell	white/ black by thermoplastic PC. Fire retardant. Other color optional by customizing
Cable	black with TPU jacket. Other color optional by customizing
Features	
Features	Integrated external mold. Excellent waterproof and dustproof performance.
Package	
Package	Each in PE bag, then in Pizza box, then 5 Pizza boxes into 1 master carton Deluxe pack: each in Oxford cloth with zipper & handle, easy for end users to keep
Customizing	
Customizing	Logo put on shell by laser or flexible tooling; on Oxford cloth bag by printing
Certificate	
Certificate	CE, UKCA, ROHS, ISO

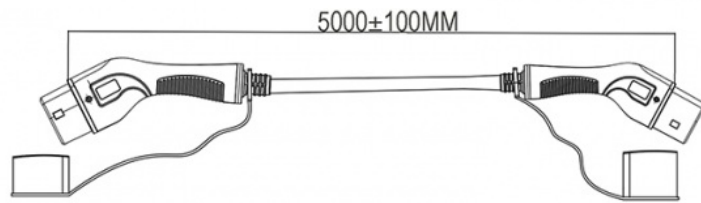
#### Advantages:

Pure copper core-Low fever

High efficiency Fast charging

Security-Safety certification

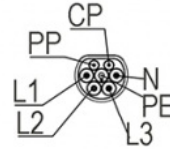
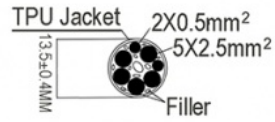
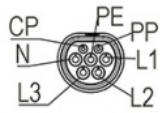
Portable-Household or tourism



Vehicle side

Cable

Station side



## EV CHARGING CABLE

MEET IEC6185-1 and EN62196-2 EUROPEAN STANDARD



Packing list

# EASY CARRY IN THE CAR

## ELIMINATE YOUR POWER ANXIETY

Fashionable appearance, Compact design  
Charging anytime, anywhere, easy to carry



Storage bag to keep item clean and unharmed

### Caution:

Don't submerge the EV charging cable in water.

Don't step on, fold or knot the cable.

Don't drop the EV charging box or place a heavy object on it.

Don't place the charging cable near high temperature object when charging.

Don't operate the EVSE in temperatures beyond its operating range of -25°C to 55°C.

Power-supply side input cable should be at least 3\*2.5mm (recommended 3\*4mm), with a standard 16A socket. It is suggested that

the power distribution is done by the professionals.

Don't put fingers into the charging connector when the power plug is still connecting to the power.

Don't use this EV charging box when the cable is damaged.

The EV charging box is only for EV charging using.

Don't use this device with other brand's extension cord or adapter.



**MINKO (SZ) TECHNOLOGY CO., LIMITED**



+8613539872669



yumiko@szminko.com



evstationcharger.com

309 West Lake Industrial Zone, Cuishan Road, Dongxiao Street, Luohu District, SZ

